



ROBSHORE
LIMITED

Marine Catalogue



CONTENTS

LIFE JACKETS **PAGE 6**

**LIFE JACKETS AND LIFE
SAVING EQUIPMENT** **PAGE 7**

VHFS RADIOS **PAGE 8**

MARINE LIGHTS **PAGE 9**

**SAFETY AIRFLOW &
FIRE SUPPRESSION** **PAGE 10**

**DIESEL
WATER PUMP** **PAGE 11**

CONTENTS

PRESSURE WASHERS **PAGE 12**

**WELDING
CONSUMABLES** **PAGE 13**

**WELDING
CONSUMABLES** **PAGE 14**

**WELDING AUXILIARY
EQUIPMENT** **PAGE 15**

**WELDING AUXILIARY
EQUIPMENT** **PAGE 16**

PAINTING EQUIPMENT **PAGE 17**

CONTENTS

**PAINTING
EQUIPMENT** **PAGE 18**

**SANDING AND
BUFFING EQUIPMENT** **PAGE 19**

MAINTENANCE TOOLS **PAGE 20**

**STAINLESS STEEL HOSE
CLAMP** **PAGE 21**

PPE **PAGE 22**

EYEWEAR **PAGE 23**

CONTENTS

GLOVES PAGE 24

GLOVES PAGE 25

GLOVES PAGE 26

GLOVES PAGE 27

**WELDED TYPE ZINC
ANODES PAGE 28**

FENDERS PAGE 29

FENDERS PAGE 30

CONTENTS

**MARINE MOORING
EQUIPMENT** **PAGE 31**

**MARINE MOORING
EQUIPMENT** **PAGE 32**

**RIGGING EQUIPMENT
AND SHACKLES** **PAGE 33**

**RIGGING EQUIPMENT
AND SHACKLES** **PAGE 34**

**RIGGING EQUIPMENT
AND SHACKLES** **PAGE 35**

**RIGGING EQUIPMENT
AND SHACKLES** **PAGE 36**

**MISCELLANEOUS
ITEMS** **PAGE 37**

LIFE JACKETS

275N double chamber life jackets with automatic system type UML.

***Model: ES369**

*Certificate: CCS Class Certificate *Packing Size: around 55x32x40cm, 19.5kg

*Material of Cover: Polyester oxford fabric

Material of Bladder: Nylon+TPU

*Inflated Chamber: double(one as a spare)

Inflated Mechanisms: 2x automatic or

manual CO2 Cartridge: 2x 60gram

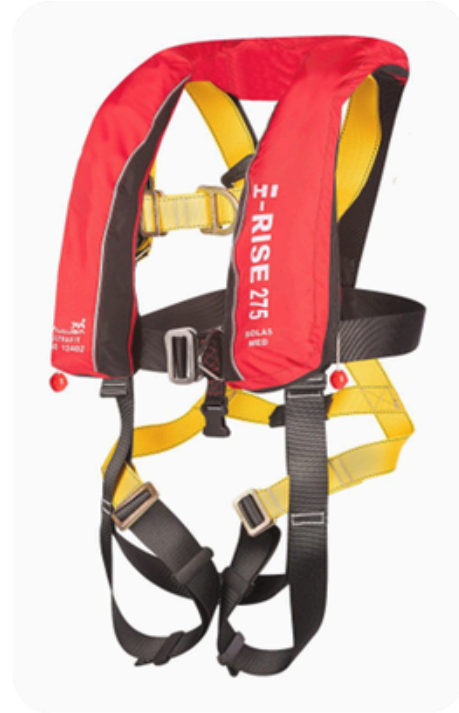
*Buoyancy: 275N Buoyancy Loss:

5% (after 24h)

*Load Bearing: 275kg

*Life jacket weight: ≤0.85kg

Inflation Time: 3 to 5 seconds



REF NO: 001

Life Jacket Light RSYD-A2

Comply with SOLAS 1974 and latest amendment

- Manual switch and water automatic
- Illuminant: LED
- Flare time: more than 8 hours
- Luminous Intensity: more than 0.75cd
- Flash Frequency: 50-70 times/minute
- Battery: Lithium battery CR123A
- Validity: 5 years
- Certificate: CCS/EC/ZY
- MED Certificate



REF NO: 002

LIFE JACKETS AND LIFE SAVING EQUIPMENT



REF NO: 003

150N Work Vest



REF NO: 004

4.3 KG Life Buoy



REF NO: 005

ENTEL
Portable Radio VHF Submersible Marine

Marine solar lanterns *Model: AH-LS-C-LED

*Visible range: 3nm

*With GPS synchronization function

*Certificate: CE Certificate



REF NO: 006



REF NO: 007

Lifebuoy light with lithium battery Model: RSQD-1

With IACS CCS Class Type Approval
lithium battery

(More than 2.0 cd in all directions of the upper
hemisphere for a period of least 2 hours)

SAFETY AIRFLOW & FIRE SUPPRESSION



REF NO: 008

**Circulation Fan SHT-30
with CE Certificate**



REF NO: 009

12" X 10M Flex Duct



REF NO: 010

Silicone Fire blanket

***Thickness: 0.5mm**

***Dimension: 2m*50m/roll**

***Color: Red**

DIESEL WATER PUMP

Diesel water pump 3"

Brand: LAUNTOP

Model: LDP80CL

Fuel Tank capacity:12.5L(Large fuel tank + rack)

*Inlet/Outlet dia:3"

*Max.Capacity:50M3/H

*Max.discharge head:25m

*Self-priming time:120s/4m

*Max suction head:8m

*Engine model:LA178

*Starting way: Manual

*Net weight:49kg

*Dimenison:560*475*690mm

Spare parts for diesel water pump 3" AVAILABLE



Diesel water pump 2"

Brand: LAUNTOP

Model: LDP50CL

*Fuel Tank capacity:12.5L(Large fuel tank + rack)

*Brand: launtop

*Inlet/Outlet dia:2"

*Max.Capacity:30M3/H

*Max.discharge head:25m

*Self-priming time: 70 s/4m *Max suction head:8m

*Engine model:LA178

*Starting way: Manual

*Net weight:41kg

*Dimenison:495*475*650mm

Spare parts for diesel water pump 2" AVAILABLE



PRESSURE WASHERS

High-pressure Washer KM-D2815YC Plus



REF NO: 013

High-pressure washer KM-D2815YC

***Drive mode: Diesel Engine + Electric Start Washer**

***Diesel Engine Brand: Yuchai Plus**

***Pressure: 280Bar**

***Power: 18HP *Flow: 15L/ hour**

Certificate: Factory Quality Certificate

High-pressure Washer EF200



EP170 / EP200

High-pressure washer EF200

***Drive mode: Electric Motor *Pressure: 200Bar**

***Flow: 16L/ hour**

*** With standard accessories:**

- 1. One 10-meter high-pressure tube**
- 2. One set of spray gun and spray rods**
- 3. One fan-shaped nozzle**
- 4. One cylindrical nozzle**
- 5. Cable 5 meters**
- 6. Water inlet steel wire pipe 5 meters**
- 7. 10 O-rings**

REF NO: 014

Welding cable



REF NO: 015

Type: Double sheath welding cable
 Single conductor, 500 AMP *Copper core: 1*95
 *Length: 153m/roll
 *Voltage Rating: 600V. *Temperature Range: -15°C

*Model: LC40, 500Amp capacity
 *Camlock Style Male & Female for 3/0-4/0 Cable
 *Materials: Solid brass and hard rubber



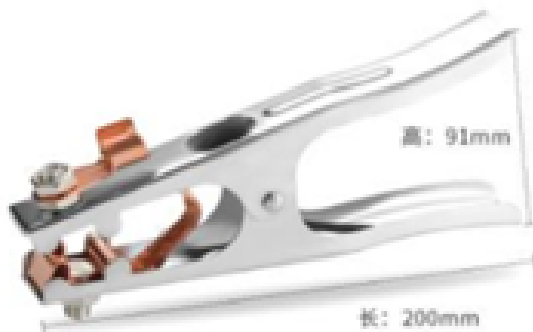
REF NO: 016

Victor #3 cutting tip



REF NO: 017

Victor #3 cutting tip
Cutting thickness:2"



REF NO: 018

Welding ground clamp

*US version*Current capacity: 500A

*Jaw Opening: around 5.5cm

*Material: Iron + Braided Copper

净重约: 0.38kg
一箱50把



REF NO: 019

300-500A

Welding holders

*US version*Spec: 500AMP

*Material: Copper *Length : 22CM

WELDING AUXILIARY EQUIPMENT

Welding lugs kits

140PCS

60PCS



50PCS



30PCS



SC6-5 10pcs	SC6-8 10pcs	SC10-6 10pcs	SC10-8 10pcs	SC16-6 5pcs	SC16-8 5pcs	SC25-6 5pcs	SC25-8 5pcs
							

REF NO: 020

*Welding lugs kits 140pcs/set*With box

*Wiring terminal(Golden)SC6-5:

10pcs SC6-8: 10pcs

SC10-6: 10pcs

SC10-8: 10pcs

SC16-6: 5pcs

SC16-8: 5pcs

SC25-6 : 5pcs

SC25-8: 5pcs



REF NO: 021

Welding Lugs

*Spec.: 2/0AWG*3/8

*Spec.: 4/0AWG*1/2

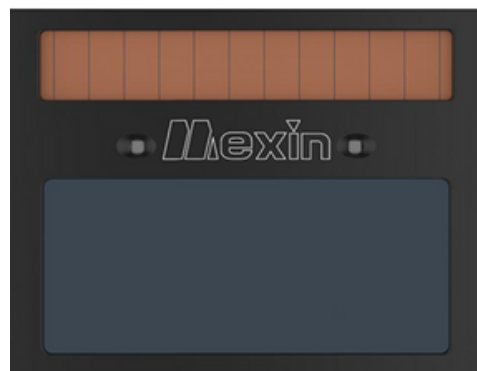


REF NO: 022

Welding helmet, half face

***Model: LYG-0U-4000**

***Lens Size: 108*50*3mm**



REF NO: 023

Welding lens 2" x 4.25", dark

***Model: LY1001-PC *Size:**

108*50*3mm



REF NO: 024

Steel brush with wooden handle
Medium Steel Brushes
***Black wire * 4 rows * 16 wires (4 columns)**
- 425mm
***Suitable for oil stain removal from range hoods, metal rust removal, copper rust, iron rust, and cleaning of antiques**



REF NO: 025

Plastic Cable Ties: Black
Size: 6" (150mm)
Size 8" (200mm)
Size 10" (250mm)
Size 12" (300mm)
Size 18" (450 mm)



REF NO: 026

Metal Scrapers (Solid wood handle Carbon steel blade)
1", 2", 3"



REF NO: 027

**4" Mini Roller Sleeves
8" Mini Roller Sleeves**



REF NO: 028

**Mini Roller (Handle Only)
Short Handle Length: 25cm
Long Handle Length: 36cm**



REF NO: 029

**Paint Brush w/wooden Handle:
1", 2", 3", 4"**



REF NO: 030

**Angle or knuckle brush
w/wooden handle:
1", 2", 3", 4"**



REF NO: 031

**4" (100mm) Buffing pads, velcro back
5" (125mm) Buffing pads, velcro back**



REF NO: 032

4 1/2" wire wheel brush steel, knotted



REF NO: 033

Cable Orbital Sander:

- *China brand (Bole)
- *Speed: 2800~5800r/min
- *Grinding disc diameter 125mm
- *Eccentric distance 15mm
- *with Aluminum head, Speed adjustment knob, Self-locking button power switch, Self-adhesive disc, Motor heat dissipation hole
- *Power System: 220-240V, 50/60HZ, 1Phase
- *Product function: waxing, polishing, mirror restoration of cars, leather, floors, etc.



REF NO: 034

**5" 6 holes velcro back round sand paper, 60 grit
5" 6 holes velcro back round sand paper, 80 grit
5" 6 holes velcro back round sand paper, 100 grit**



REF NO: 035

4" cup brush steel, knotted



REF NO: 036

**300g Chipping hammer scaling - medium
500g Chipping hammer scaling - large/heavy duty**



REF NO: 037

9L Strongy H/D Construction Bucket



REF NO: 038

Painter's Tape

- 1"; grade 8 (Blue, 25mm*50m)**
- 2"; grade 8 (Blue, 50mm*50m)**
- 4"; grade 8 (Blue, 100mm*50m)**



REF NO: 039

**Common duct tape, 2" *4.8CM x 16M
*grey color**



REF NO: 040

Razor cutting disc 4 1/2" X 3/64 X 7/8, metal



REF NO: 041

Grinding disc 4 1/2" X 1/4" X 7/8"

STAINLESS STEEL HOSE CLAMP

Stainless steel hose clamp Diameter: 16-25mm (0.63"-1")

Stainless steel hose clamp Diameter: 18-32mm (0.71"-1.26")

Stainless steel hose clamp Diameter: 21-38mm (0.82"-1.5")

Stainless steel hose clamp Diameter: 27-51mm (1.06"-2")

Stainless steel hose clamp Diameter: 40-63mm (1.57"-2.48")

Stainless steel hose clamp Diameter: 52-76mm (2.05"-3")



Stainless steel hose clamp Diameter: 65-89mm (2.56"-3.5")

Stainless steel hose clamp Diameter: 81-108mm (3.2"-4.25")

Stainless steel hose clamp Diameter: 105-127mm (4.13"-5")

Stainless steel hose clamp Diameter: 118-140mm (4.6"-5.5")

Stainless steel hose clamp Diameter: 130-152mm (5.1"-6")

Stainless steel hose clamp Diameter: 141-165mm (5.55"-6.5")



REF NO: 043

GE microporous protective coverall w/hood



REF NO: 044

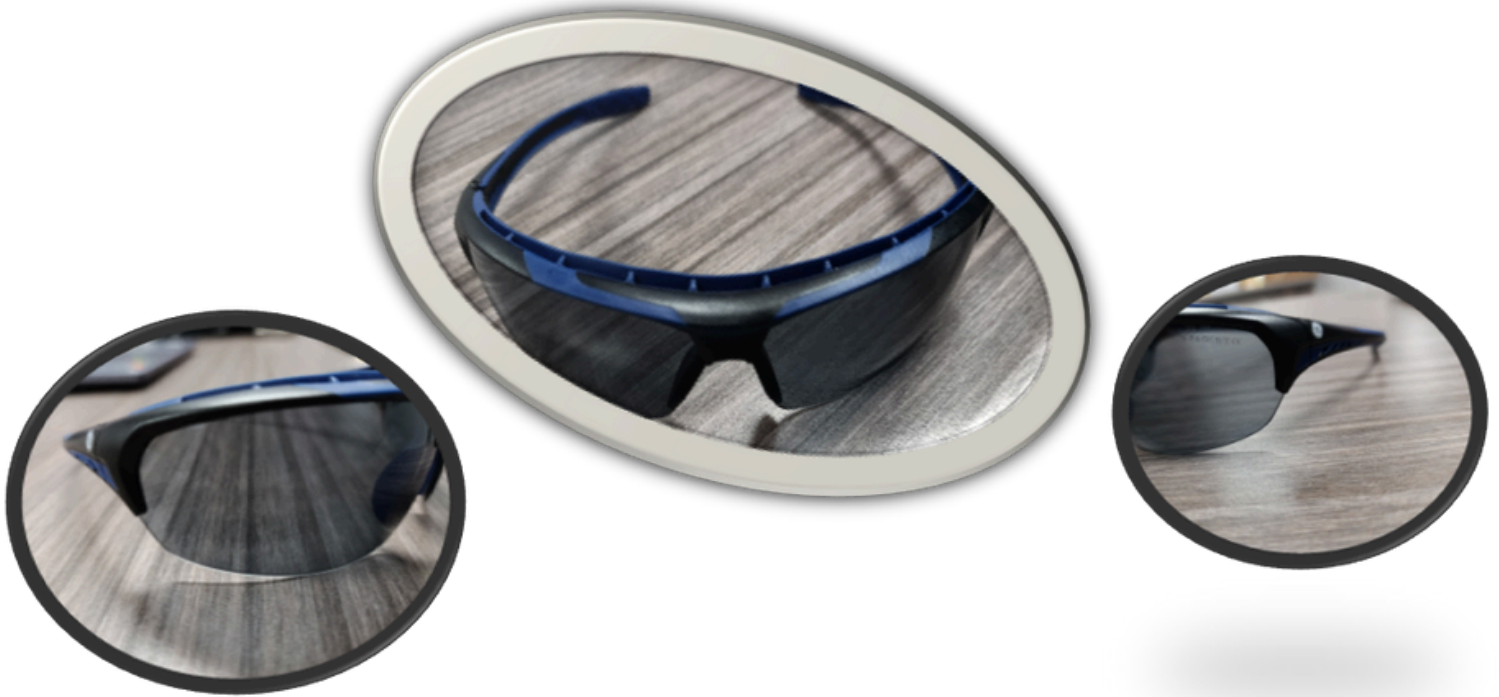
Full brim hard hat vented



REF NO: 045

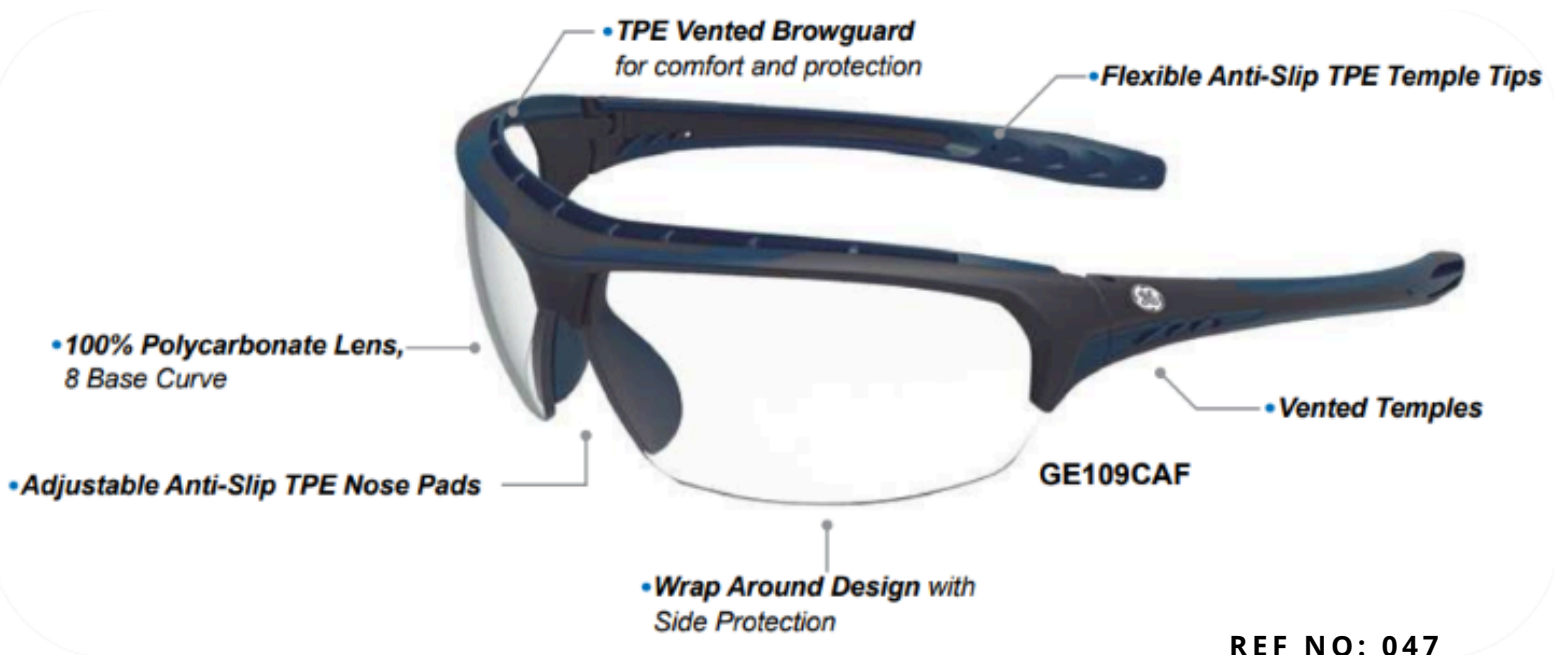
KN 95 face mask
*Ear strap type

EYEWEAR



REF NO: 046

GE SAF half frame smoke protective eyewear



REF NO: 047

GE CAF half frame clear protective eyewear

GLOVES

- **Longer Cuff**
For better protection and comfort

- **13 Gauge**
HPPE, Polyester, Nylon, Glass Fiber and Spandex Liner



- **Touch Screen Compatible**
- **Reinforced Thumb Crotch**
- **Black Sandy Nitrile Coating**

REF NO: 048

GE HI-VIS sandy nitrile dipped gloves

- **Longer Cuff**
For better protection and comfort

- **13 Gauge**
HPPE, Basalt, Steel, Spandex and Polyester Liner



- **Stitched TPR Impact Protection**



PATENT PENDING



- **Touch Screen Compatible**
- **Stitched Reinforced Thumb Crotch**
- **Black Foam Nitrile Coating**

REF NO: 049

GE Foam Nitrile TPR Impact Gloves

GLOVES



GE 4 Mil nitrile gloves - black



GE 6 Mil nitrile gloves -BLUE



GE 8 Mil nitrile gloves - orange

GLOVES



REF NO: 053

GE Cow Split Leather Welding Gloves



REF NO: 054

GE Reinforced DOUBLE PALM LEATHER GLOVES



LEATHER WELDING GLOVES

GLOVES



REF NO: 056

High impact gloves

*Available sizes:

M: L26cm x W 10.5cm

L: L26.5cm x W 11cm

XL: L27cm x W11.5cm

XXL: : 28cm x W12cm



REF NO: 057

Workman's gloves leather
Large



REF NO: 058

Nitrile sandy gloves
Large



REF NO: 059

Dotted cotton gloves

WELDED TYPE ZINC ANODES



REF NO: 060



300X150X35Mm, 10Kg
•DIMENSION: 300x150x35mm
•Gross Weight: 10KG
Status: 100%
New produce Certificate: Mill Test
and Quality Certificate

250x100x30Mm, 5Kg
Dimension:250x100x30mm
•Gross Weight: 5KG
Status: 100%
New produce Certificate: Mill Test
and Quality Certificate

FENDERS



REF NO: 061

300*300*2500I DC Shape Rubber Fender with bolts and nuts



REF NO: 062

0.6D * 1.2L Foam Filled Fenders



REF NO: 063

PNEUMATIC RUBBER FENDERS
2.5 X 4.0M 80 KPA



REF NO: 064

- DD SHAPE RUBBER FENDER; 150 X 150 X 2500L
- DD SHAPE RUBBER FENDER; 100 X 100 X 2500L
- DD SHAPE RUBBER FENDER; 200 X 200 X 2500L
- DD SHAPE RUBBER FENDER; 250 X 250 X 2500L
- DD SHAPE RUBBER FENDER; 500 X 500 X 2500L



REF NO: 065

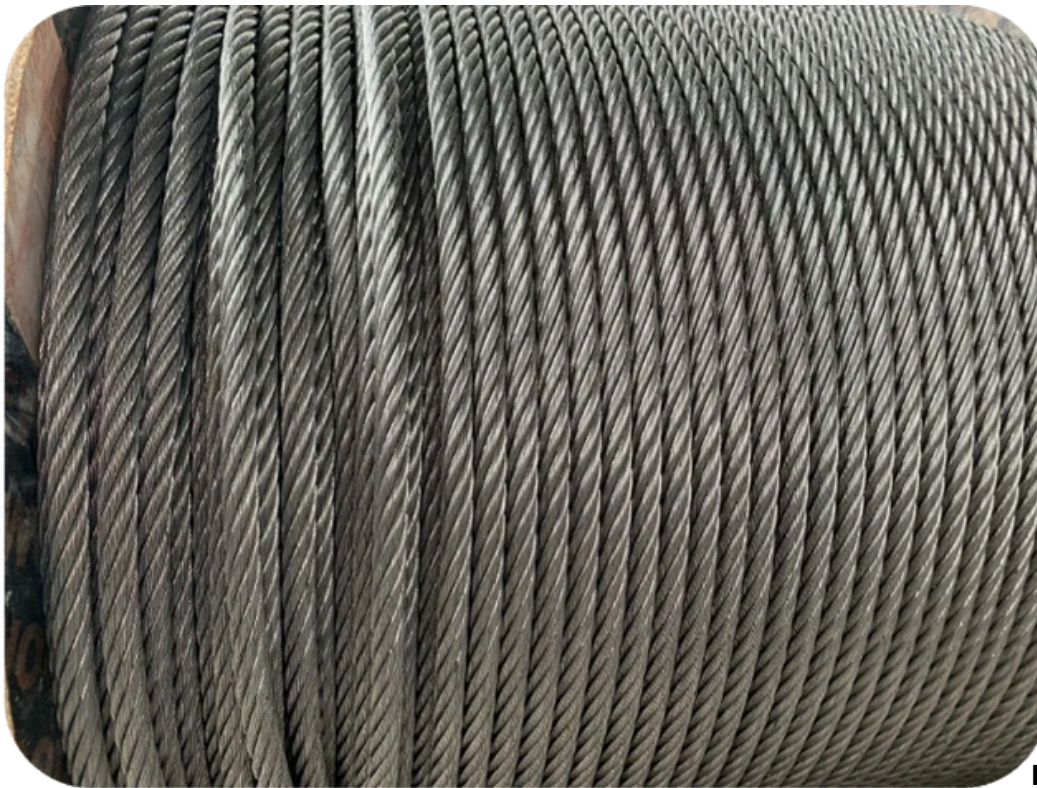
W-Bow Fender

- Size: W (480/420) x L (447/462)mmH300mm
- Size: W (480/420) x L (476/491)mmH300mm
- Size: W (480/420) x L (505/620)mH300mm
- Size: W (480/420) x L (632/857)mmH300mm
- Size: W (480/420) x L (866/1101)mmH300mm
- Size: W (480/420) x L (1102/1102)mm*H300mm



REF NO: 066

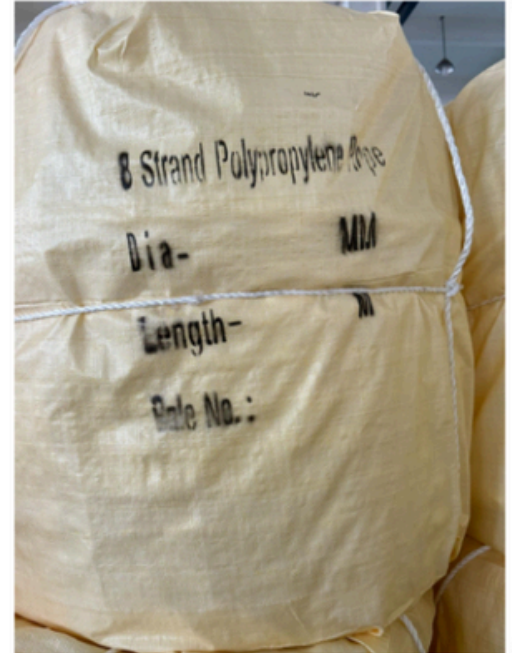
**Studless Link Chain 24mmx100m,
Grade G2 MBL 298.90KN**



REF NO: 067

**38mm*600m Winch anchor ropes
38mm*500m winch anchor ropes**

**28mm*500m winch anchor ropes
36mm*500m winch anchor ropes**



REF NO: 068

Mooring Ropes

1/4 " (6mm) x720' (220m)
1/2 " (14mm) x720' (220m)
1"(26mm) x720' (220m)

1.5"(38.1mm) x720' (220m)
2"(50.8mm) x720' (220m)
2.5"(63.5mm) x720' (220m)
3"(76.2mm) x720' (220m)

RIGGING EQUIPMENT AND SHACKLES



REF NO: 069

1 1/4"
Hot dip galvanized
***Certificate Factory Quality**



REF NO: 070

***3/4"**
***WLL:4.75T**
***Hot Dip Galvanized**
***Certificate: Factory Quality**
***2"**
***WLL: 35T**
***Hot Dip Galvanized**
***Certificate: Factory Quality**
***2 1/2"**
***WLL:557**
***Hot Dip Galvanized**
***Certificate: Factory Quality**



REF NO: 071

S/S Split Pin Kit
'Each set in one box:
M4x60mm,25pcs
M3.2x40mm,25pcs
M3.2x30mm,25pcs
M2.5x40mm,25pcs
M2.5x25mm,25pcs
M1.6x25mm,35pcs



REF NO: 072

Split Pin
***M8*130**
***Material SS304**
***M6*100**
***Material SS304**



REF NO: 073

*** 1/2" X 9", WLL 2200 lbs.**
***Hot dip galvanized**
***Certificate: Factory Quality**
*** 1/2" x 12", WLL 2200 lbs.**
***Hot dip galvanized**
***Certificate: Factory Quality**



REF NO: 074

SINGLE LEG THIMBLE EYE WIRE ROPE SLING
***1 1/4"X30'**
(32mm x L 9.15m)
***Structure: 6*36WS*IWR, RHOL**
***Galvanized, with oil**
***Pressure head soft ring on both end, and THIMBLE EYE**
WT32
***Soft eye: 640mm**
***Breaking Load: 580.5KN**
***Certificate: Factory Quality**
***1 1/4"X10'**
(32mm x L 3.05m)
***Structure: 6*36WS*IWR, RHOL**
***Galvanized, with oil**
***Pressure head soft ring on both end, and THIMBLE EYE**
WT32
***Soft eye: 640mm**
***Breaking Load: 580.5KN**
***Certificate: Factory Quality**
***1 1/2" x30'**
(38mm x L 9.15m)
***Structure: 6*36WS*IWR, RHOL**
***Galvanized, with oil**
***Pressure head soft ring on both end, and THIMBLE EYE**
WT 40
***Soft eye: 760mm**
***Breaking load:819KN**
***Certificate: Factory Quality**

RIGGING EQUIPMENT AND SHACKLES

Single Leg Soft Eye Wire Rope Sling

*1 1/4" x30'

(32mm x L 9.15m)

*Structure: 6*36WS+IWR,RHOL

*Galvanized, with oil

*Pressure head soft ring on both end

*Soft eye: 640mm

*Breaking load: 580.5KN

*Certificate: Factory Quality



REF NO: 075

*1 1/4" X 10'

(32mm x L 3.05m)

*Structure: 6*36WS+IWR,RHOL

*Galvanized, with oil

*Pressure head soft ring on both end

*Soft eye: 640mm

*Breaking load: 580.5KN

*Certificate: Factory Quality

*1 1/4", X30' m

(38mm x L 9.15m)

(32mm x L 3.05m)

*Structure: 6*36WS+IWR,RHOL

*Galvanized, with oil

*Pressure head soft ring on both end

*Soft eye: 760mm

*Breaking load: 819KN

*Certificate: Factory Quality



REF NO: 076

Round Sling

'WLL:5000KG

*length 3.5m x thickness60mm



REF NO: 077

S/S Chain

*Material:SS316

*Nominal diameter: 10mm

(Inner Length 30mm, Inner Width 12mm)

*Breaking load around 4T

RIGGING EQUIPMENT AND SHACKLES



REF NO: 078

RSB Fastener
+50mm*8m
***Material: Polyester**
***Maximum load 6T(6000kg)**

***75mm*8m**
***Material: Polyester**
***Maximum load 8T(8000kg)**

***100mm*8m**
***Material: Polyester**
***Maximum load: 10T (10000kg)**



REF NO: 079

RSC Fastener
***50mm*8m**
***Material: Synthetic fibers**
***Maximum load:5000kg**

***75mm+8m**
***Material: synthetic fibers**
Maximum load: 10T



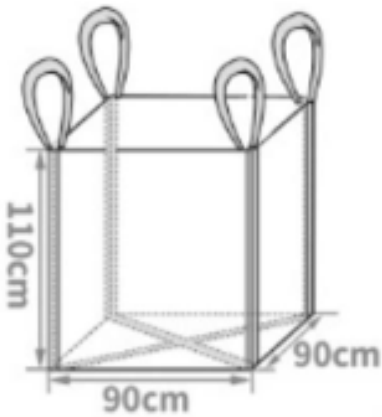
REF NO: 080

WA Web Sling
'WLL:2000KG
***Approximate thickness:7.5mm**
***Approximate width: 50mm (2")**
***Lengt 4.5m (14.76")**



Oil only Absorbent Pads
Size: 40cm x 50m, 4mm.
Capacity: $\geq 126L$

REF NO: 081



Ton bag *90*90*110mm
***Capacity: 1.5ton**
***Material: PP**
(Polypropylene)

REF NO: 082



REF NO: 083

Land Use Armor PVC Electric Cables 4 x 95mm 300meters