

## GENERAL INFORMATION

Classification	DNVGL, + 100 A5 II Work Boat, + MC
Build	2012
Endurance	7 days
Maximum Speed	About 10.0 knots

## DIMENSIONS

Length Overall	18.0m
Breadth	8.0m
Draft (light)	2.39m
Displacement (light)	207.0t
Main Deck Area	102.0m <sup>2</sup>
GRT	92
NRT	28

## TANK CAPACITIES

Marine Diesel	30.55 m <sup>3</sup>
Fresh Water	10.80 m <sup>3</sup>

## DECK EQUIPMENT

Deck Strength	10 t/m <sup>2</sup>
Knuckle Boom Crane (Bow)	SWL 8.2 t at 9.26 m
Knuckle Boom Crane (Bow)	SWL 1.36 t at 8.17 m
Towing Winch	150 kN at 13.5 m/sec
Towing Hook	15 t
Bollard Pull	18 t
Electrical Power on Deck	415V/230V / 50Hz

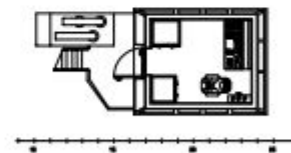
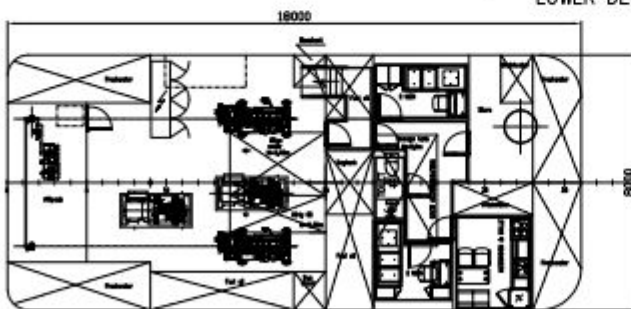
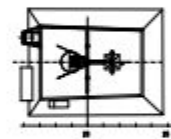
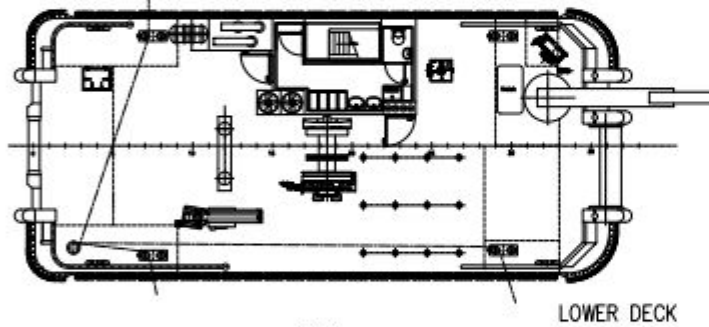
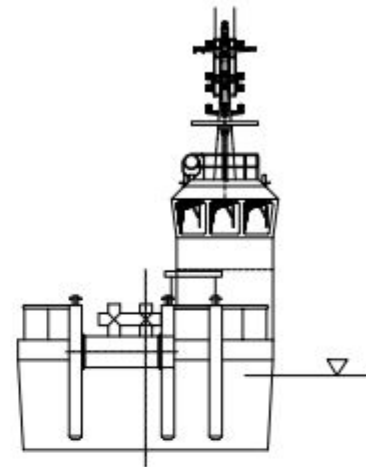
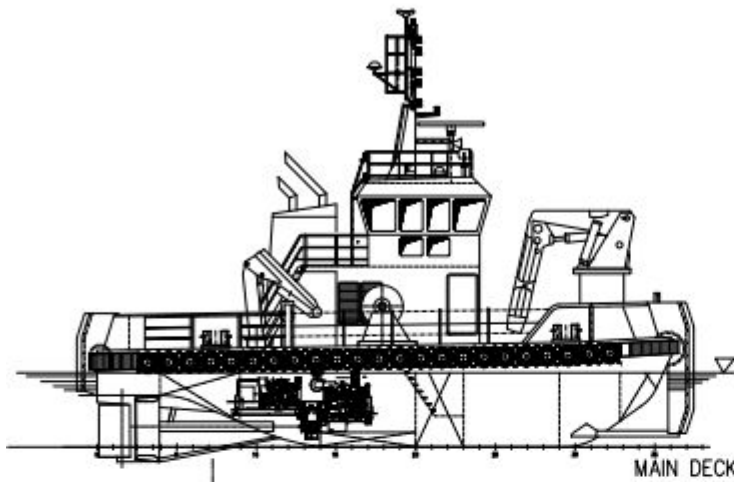
## PROPULSION / MACHINERY

Main Engines	2 x Cummins KTA 19M3, total 1200 bhp
Main Propellers	Twin Fixed Pitch Propeller
Auxiliary Generators	2 x Cummins BT 5.9-D(M) MC, 3 ph 234 C 440 V

## COMMUNICATIONS

Primary	IOP
GMDSS	As Per GMDSS A1

# GENERAL ARRANGEMENT



MAIN PARTICULARS  
 LENGTH oa. 18,00 m  
 BEAM mid. 8,00 m  
 DEPTH 0,5L 3,30 m  
 DRAFT 2,5 m

CREW 4 persons