



AHTS KOOLE 35

The KOOLE 35 is an ASD anchor handling tug supply vessel (AHTS). With its excellent seakeeping behavior and her maneuverability the KOOLE 35 has outstanding towing characteristics. The KOOLE 35 has a bollard pull of 77 tonnes ahead and 73 tons astern, classed by Bureau Veritas with an unrestricted sailing area.

The KOOLE 35 is manned with an experienced crew, equipped with large variety of equipment, in combination with the extreme large bunker capacity of 270.000 liters, economic engines and seaworthiness hull gives the vessel maximum reach while towing and an excellent seakeeping behavior. With its multi-purpose design, ASD propulsion and outstanding towing characteristics, the KOOLE 35 can be used for worldwide operations such as, but not limited to, single and double towing, anchor handling, anchor recovery, rig move assistance, salvage assistance, wreck removal, harbor towage, escorting and deck and/or cargo transportation.

The KOOLE 35 is equipped with a towing- and anchor handling winch aft, towing winch on bow, deck crane and Karmoy towing pins. Accommodation on board is provided for 10 persons.

GENERAL	
Name	KOOLE 35
Type of vessel	Anchor Handling Tug / Utility Vessel
Class	Bureau Veritas I  HULL  MACH Tug Unrestr. Nav.  AUT-UMS
Flag	Malta
Port of Registry	Valetta
Year Built	2001
Callsign	9HA4788
IMO Number	9220548
MMSI	248740000

DIMENSIONS	
Length Overall	35,77 meter
Breath Overall	11,00 meter
Depth at Sides	5,60 meter
Minimum Draft	4,80 meter
Operating Draft	4,90 / 5,00 meter
Maximum Draft	5,20 meter
Minimum Airdraft	19,20 meter
Maximum Airdraft	19,20 meter
Gross Tonnage	498 GT
Net Tonnage	149 NT
Clear deck area	85 m ²
Cargo capacity	3x 1 TEU (20 tons)
Cargo deck load	5,0 tons per m ²

TANK CAPACITY	
Fuel Oil	270,0 m ³
Fresh Water	33,4 m ³
FiFi foam tanks	N/A
Lube Oil	13,782 m ³
Hydraulic Oil	5,043m ³
Dirty Oil	4,897 m ³
Sewage	9,038m ³
Fuel Oil Transfer Pump	35 m ³ /h
Fresh Water Transfer Pump	2 m ³ /h

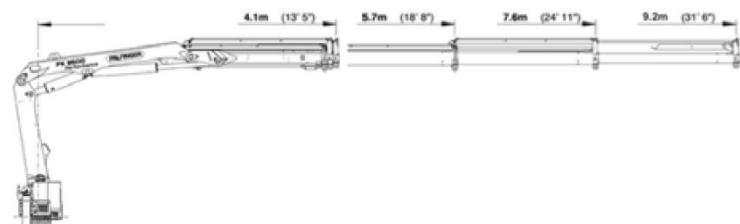
NAUTICAL AND COMMUNICATION EQUIPMENT	
Sea areas	A1+A2+A3
Radar system	2x Furuno RPU-013 with arpa
SSB	Sailor 6301 MF/HF
Chart system	1x transas with BA chart
Autopilot	Robertson AP9 MK3
Inmarsat C	Furuno felcom 18 with sass and Irit
Echo sounder	Skipper GDS 101
GPS	NSR NRG-3000 / Furuno GP39
AIS	Furuno FA 150
Gyro Compass	Alphatron Alphaminicourse
Navtex	Furuno NX-700A
Dopplerlog	N/A
V-Sat	Intellian

PERFORMANCES	
Bollard Pull	77,0 tons ahead / 73,0 tons astern
Maximum Speed	12,0 knots
Economic Speed	8,50 knots

PROPULSION SYSTEM	
Main Engines	2x ABC 8 MDZC diesel
Total Power	3.700 kW = 5.028 BHP
Gearboxes	2x ASD propeller, 2 x 1,850 kW
Propulsion	2x Schottel SRP1515FP
Propellor Diameter	2100 mm
Bowthruster	Schottel STT 100 CP, 200 kW

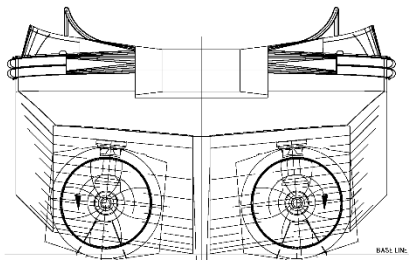
AUXILIARY EQUIPMENT	
Generator sets	2x Scania DG 95 M03D
Capacity	2x 145kw/400 Volt
Hydraulic set	1x72kw 2400 Volt Scania harbour gen set
Fresh Water Maker	water maker MN4 4000ltr/day
Gasoil separator	Alfa Laval Diesel separator MMB304

DECK CRANE	
Type Heila	Palfinger
Capacity	0,7 tons at 9,20 meters
Auxiliary marine crane	Davit crane for MOB boat, 0,85 tons

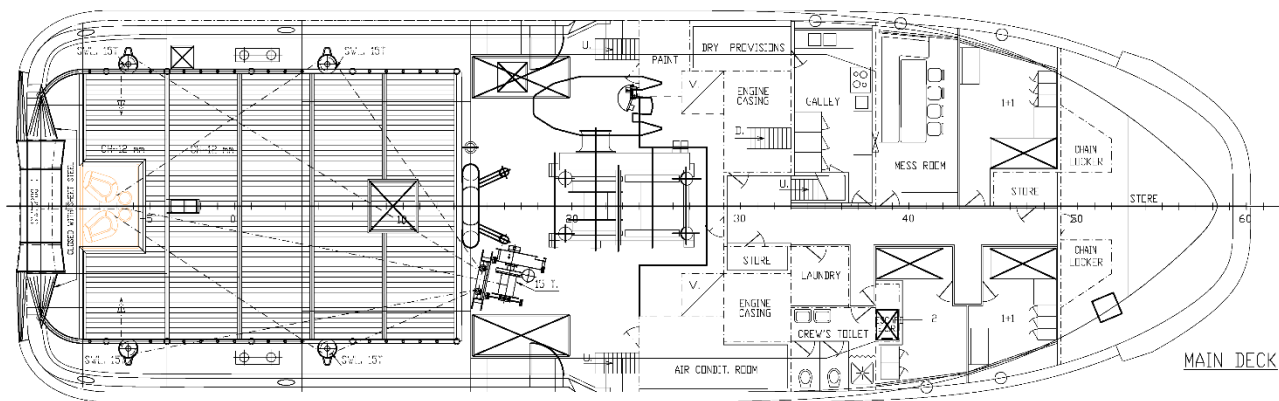
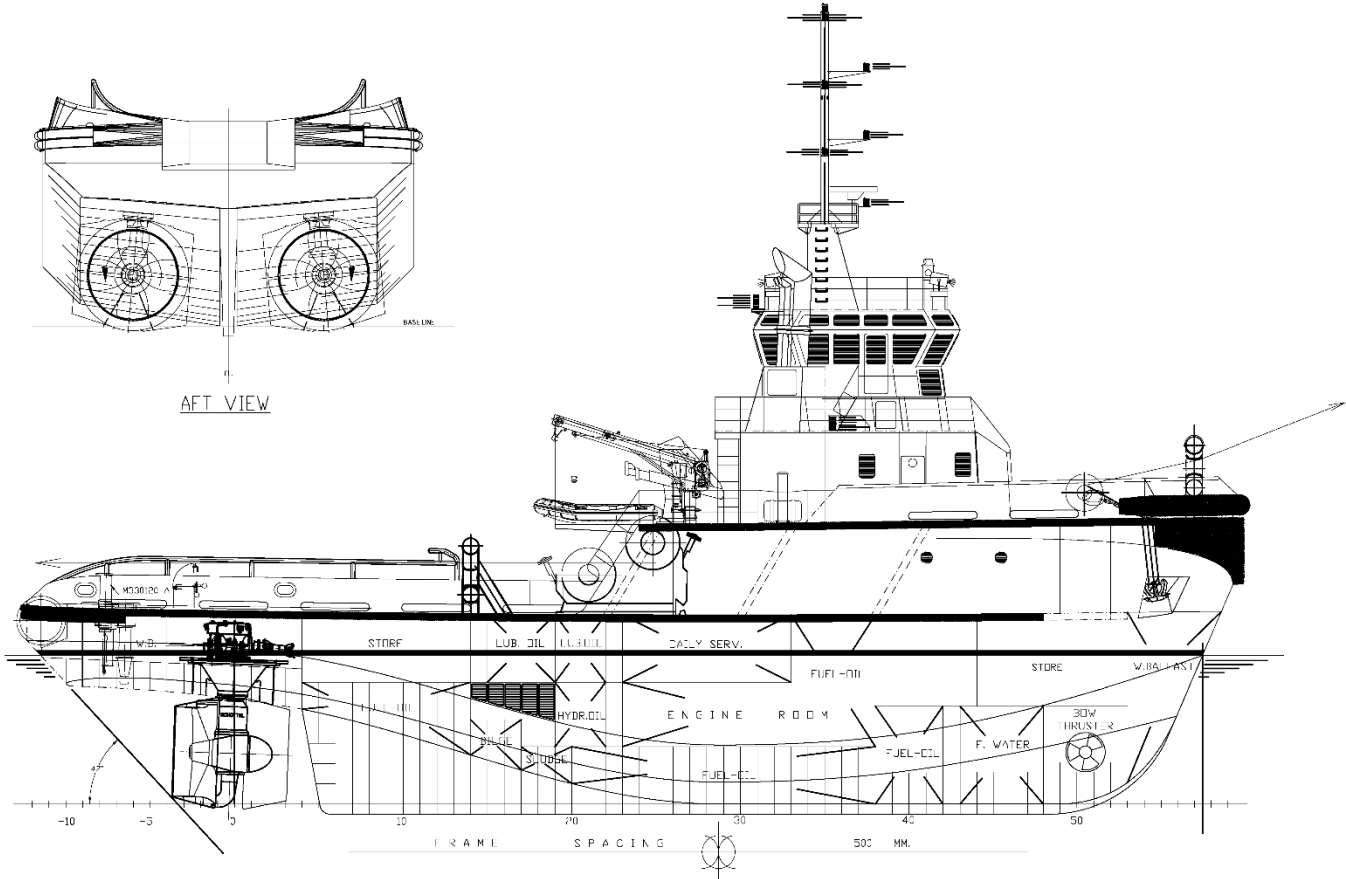


DECK EQUIPMENT	
Winch	Brusselle SLH-130/50/2-1, Dble Drm Waterfall
Towing Drum	Pull Force 44T / Holding F. 130T
Anchor Handling Drum	Pull Force 44T / Holding F. 130T
Main Towing Wire	900 meters x 48 mm
2nd Towing Wire	550 meters x 48 mm
Anchorhandling Work Wire	100 meters x 48 mm
Forward (bow) towing winch	Brusselle SLH-130/50/2-2-2
Main drum	Pull Force 65T / Holding F. 130T
Towing Wire	110 meters x 48 mm
Tugger Winch	15 tons, hydraulic operated
Towing Pins	KARMOY Towing pins SWL 160t and Stopper pins / KARM fork MBL 300t
Stern Roller	4,0m x dia 1.250mm, SWL 200 tons
Firefighting monitors	Not applicable

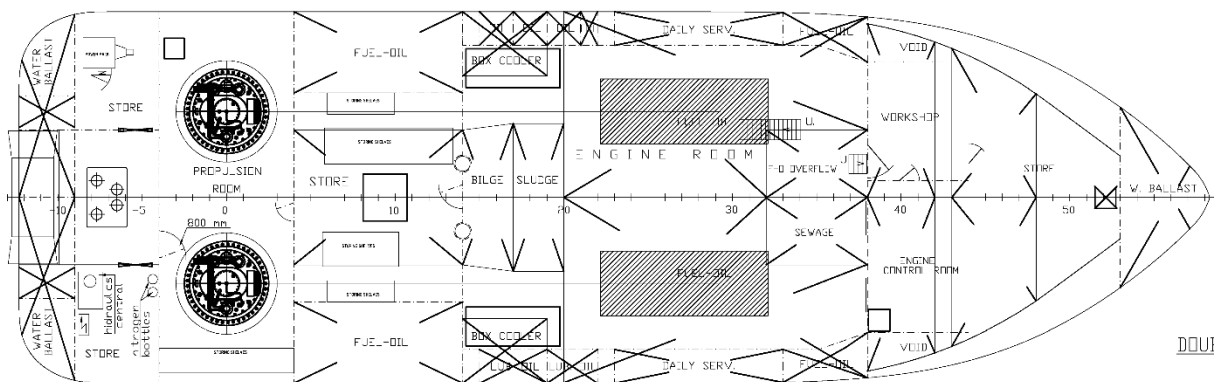
ACCOMMODATION	
Persons	10
Single Cabin	4
Double Cabin	3
Air Conditioned	Yes



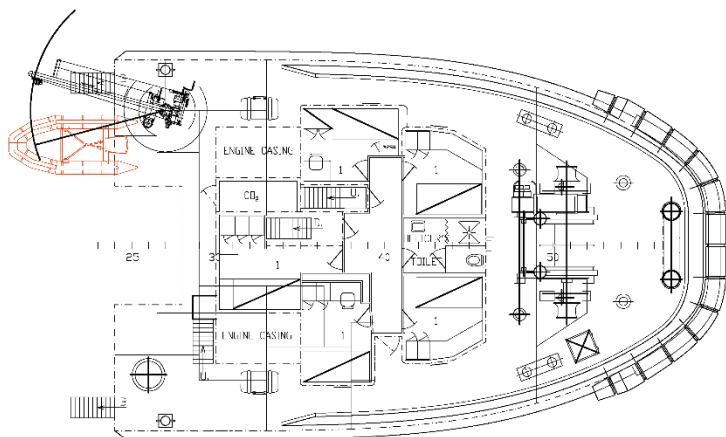
AFT VIEW



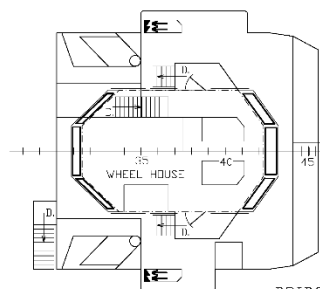
MAIN DECK



DOUBLE BOTTOM



FORECASTLE DECK



BRIDGE DECK

AHTS KOOLE 35

KMS BV
Vijfhuizerdijk 110
2141 BD Vijfhuizen
The Netherlands
+31 (0) 23 558 19 37
info@koole.eu
www.koole.eu